

# Historical Evidence for Dinosaur and Human Co-existence

*God made the beasts of the earth[...] and every thing that creepeth upon the earth after his kind; and[...] God created man[.] And the evening and the morning were the sixth day.*

## Genesis 1:25-31

Did dinosaurs and humans ever live contemporaneously? Certainly. The Book of Genesis makes it clear that every kind of land animal was created on the same day as man; therefore, people and dinosaurs must have walked the earth at the same time for at least some portion of history. This article will inspect the historical evidence for this fact, beginning with a very controversial description of an animal from one of the Bible's oldest books.

## Behold now Behemoth

In **Job 40:15**, written several thousand years ago, God instructs Job,

*Behold now Behemoth, which I made with thee[...]*

God goes on to explain that Behemoth

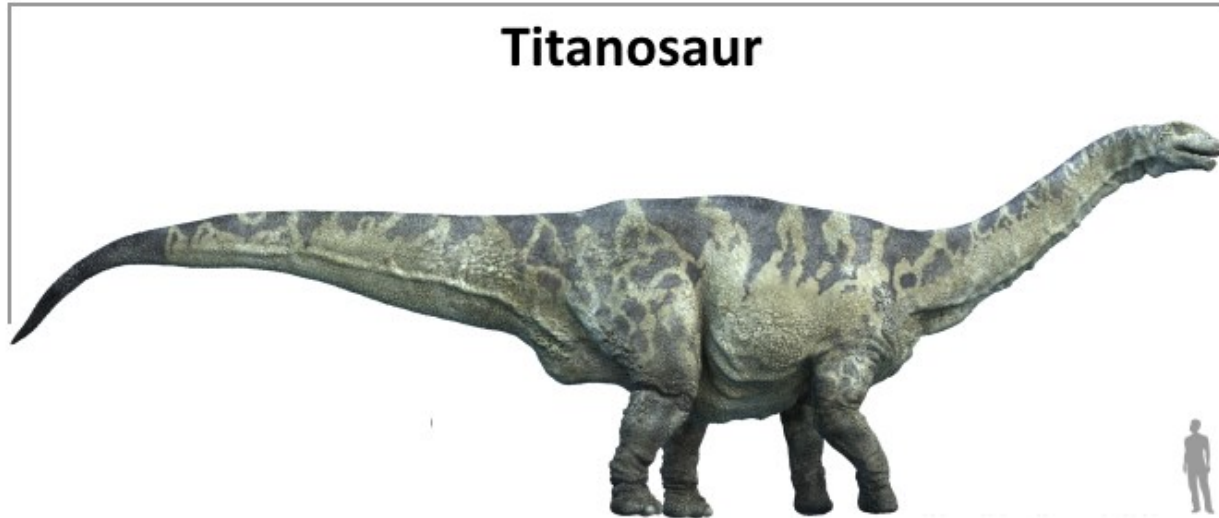
- eats grass like an ox,
- moves his tail as a cedar,
- has legs like bars of iron,
- feeds where animals play,
- finds shade in the marsh,
- is not frightened by the Jordan River rushing into his mouth,
- cannot have his nose pierced with a snare,
- can't be taken when he is on the watch, and
- is chief of the works of God.

This description of Behemoth is thorough enough for one to confidently identify the animal as a sauropod dinosaur; specifically, a *titanosaur*. Consistent with Behemoth's description, *titanosaurs*

- grazed on grass,(1)
- had massive, tapered tails comparable to a cedar tree,
- possessed unusually solid leg bones,(2)
- led an amphibious lifestyle,(3) and
- were the largest animals ever to walk the earth.

With length estimates for the largest specimens ranging from 100 to 200 feet,(4) *titanosaurs* really are chief of the works of God!

35 meters (115 feet)



<http://www.de.wikipedia.org/wiki/Argentinosaurus>

Alternative identifications of Behemoth abound, but the three most popular are the hippo, elephant, or pure fiction.

The identifications of hippo and elephant are not plausible for several reasons. Neither hippos nor elephants have a tail which inspires a comparison with a cedar, an immensely tall tree that is used repeatedly in the Bible to convey majesty. Neither hippos nor elephants are immune to being hunted either, as the passage would imply; hippos were often hunted in Africa by being pierced with a barrage of harpoons, and elephants are still poached for their ivory. And if the animal is an elephant, than why use the word behemoth when the word elephant could have been used instead, as in the Book of Maccabees? Lastly, neither elephants nor hippos can be described as chief of the works of God, considering that dinosaurs vastly exceeded them in both size and strength. Even if the term 'chief' is taken to refer to the order of creation, Genesis describes sea creatures as being created before land animals, the latter category being that in which hippos and elephants are surely found. Hippos do live a partially aquatic lifestyle, but aren't exactly what one would call a 'sea creature.'

The notion that Behemoth was *fictitious* is so absurd as to hardly merit a rebuttal. The description of Behemoth follows descriptions of very familiar animals, like goats, oxen, ostriches, and horses. For God to abruptly switch gears from describing reality to describing fiction would not make sense in the context of the text, where God is using animals He actually created as examples of His power. To claim that Behemoth is misleadingly portrayed as a real creature solely to awe Job would amount to attribution of an officious lie to God Himself, something condemned by Pope Pius X in PASCENDI DOMINICI GREGIS. God also tells Job to *behold* Behemoth, something which Job could not do if Behemoth did not actually exist. And finally, as if to erase all doubt about the actuality of Behemoth's existence, God says that he made Behemoth *along with* Job.

### **Bishop Bell's Behemoths**



creation.commesopotamian-monsters-in-paris  
Photo by Steve Lee

This brass engraving was made over 500 years ago, and decorates Bishop Bell's tomb in England. The two animals depicted are very unambiguous sauropods, but were probably known to the locals of the time as dragons. The animal on the left has a tail that ends in a spiked club, just like the sauropod *Shunosaurus*. It's fascinating to consider that these dinosaurs were probably roaming the hillsides of Medieval England!



### **Vulcanodon**

*supposedly extinct for 185 million years*



### **Shunosaurus**

*supposedly extinct for 160 million years*

[es.prehistorico.wikia.com](http://es.prehistorico.wikia.com)  
[ageofthedinosaurs.wikia.com](http://ageofthedinosaurs.wikia.com)

Now, a first impression may be that the right animal of the engraving has ears, but it's actually an illusion. The bottom 'ear' is part of the animal's back, and the top 'ear' is a mere imperfection.

Attempted rebuttals of the dinosaur interpretation have been raised, but they are all on shaky ground. It's been argued that the animal on the left is a lion. In support of this argument, skeptics of the dinosaur interpretation point out an apparent feline morphology; however, sauropods like *Riojasaurus* are often depicted with a similar body shape. More importantly, lions don't have serpentine necks, which both animals clearly do despite the wear the engraving has experienced over the past few centuries. And if one looks carefully, a reptilian head for the left creature may also be discerned. The

apparent eye and mouth on the end of its tail may simply be imperfections. Another possibility is that the supposed mouth is actually a gap separating a second pair of spikes; after all, *Shunosaurus* had two pairs of spikes on its tail. None of these arguments even attempt to refute the dinosaurian identification of the right animal, and those regarding the left are simply dubious.

The absurdity of denying the straightforward, dinosaur interpretation of this engraving is further demonstrated by the proposed identifications from the staff of the church where the tomb is located. They've argued the animals are fictitious(5), or crocodiles(6). But why would or should the animals be fictitious if they are surrounded by very real animals, like a fish, bear, pig, bat, etc.? These familiar animals are also engraved into Bishop Bell's tomb. The crocodile interpretation is obviously implausible.

## Utah Petroglyph



<https://answersingenesis.org/geology/natural-features/utahs-testimony-to-catastrophe/>  
Photo by Andy McIntosh

In Utah there is a rock formation known as Kachina Bridge. Underneath the arch is a Native American Indian petroglyph that greatly resembles a sauropod dinosaur. Even Phil Senter, author of a widely-circulated study that tried to refute the dinosaur interpretation, admits that it "*really does look like a dino*".(7) It should be noted that his study has been heavily criticized for bad science by both proponents and skeptics of the dinosaur interpretation alike; Vance Nelson has extensively debunked the proposed refutation by highlighting its poor methodology.(8)

Here is a close-up photo with added contrast.



## Diplodocus

<http://www.scheppingofevolucie.nl>  
<http://www.dinosaurjungle.com>

### Granby Idol

In 1920, an interesting stone was unearthed by a Colorado rancher. It was a foot and a half long and a foot wide, portraying a smiling face, a woolly mammoth and a sauropod dinosaur. After seeing the 66-pound stone firsthand in 1923, archaeologist Jean Allard Jeancon proclaimed:

*"If this stone can be proven genuine, it is the biggest find in all anthropological research[...] I have never seen such remarkable outlines of dinosaurs and mastodons!"*(9)

After being displayed on the rancher's porch for six years as a local novelty, it was sold to a man named Henry McKnight for the price of \$300, or about four grand in today's dollars after being adjusted for inflation.(10) It was supposedly to be given to the Smithsonian Museum, but it's never been seen since.

Fortunately, a teacher came forward four decades later and revealed that she possessed photos of the



stone taken before it's mysterious disappearance.(11) These reconstructions of the stone are based on her pictures.



genesispark.com

### Petroglyphs of Polish

In Tarapoto, Peru, lie five boulders with etchings of animals, humans, and other shapes. These are known as the Petroglyphs of Polish, and their history is poorly understood.(4) Although the extreme simplicity of the art makes it difficult to arrive at a conclusive interpretation of most of the shapes, a few of them have straightforward interpretations.



<http://www.rupestreweb.info/bellohorizonte.html>

Tony Dunnell, a resident of Tarapoto, summarizes things nicely:

*"The petroglyphs themselves come in a variety of shapes and sizes. The most easily recognisable are the images of snakes, birds and plants. Other designs and patterns are not so easily identified."*



tarapotolife.com  
Photo by Tony Dunnell

*"I asked the guardian what this was supposed to represent. Any guesses? Yep, a dinosaur, apparently[...] Granted, it does look like a dinosaur, but the petroglyphs aren't **that** old."*(12)

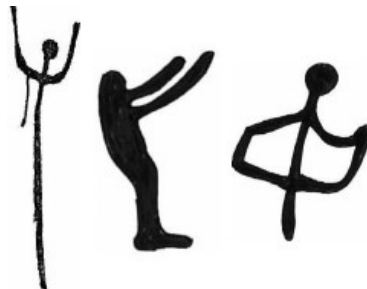
It seems Mr. Dunnell dismisses the dinosaur interpretation based solely on his belief that dinosaurs have been extinct for millions of years. But what do the experts say?

According to Lic. Marítza Rodríguez Cerrón, licensed in Art History by the National University of San Marcos, Perú, the petroglyph represents a jaguar. However, even Ms. Cerrón admits that *"Maybe the head and neck don't resemble that of a cat[...]"*(13) Her explanation? Essentially that the humanoid petroglyphs also have a tiny head and slender neck, so the author just liked drawing things with tiny heads and slender necks. But the petroglyphs that supposedly depict long-necked people are extremely ambiguous:



<http://www.rupestreweb.info/bellohorizonte.html>

In contrast, the less ambiguous human glyphs do not possess long necks:



Interestingly, this is not the first instance of ancient Peruvian art resembling dinosaurs. The controversial Ica Stones were also found in Peru and depict hundreds of dinosaurs interacting with people.(14)

## Chinese Ceratopsian

Perhaps as far back as 2,000 B.C., a people known as the Hongshan occupied the land now called China. This jade sculpture is a relic of this ancient culture. Compared with a modern portrayal of *Triceratops'* cousin, *Montanoceratops*, one is compelled to conclude the ancient Chinese saw living dinosaurs.



icr.com



kidsdinos.com

Of course, objections are expected regarding its authenticity. It's been argued that it's a recent creation, citing the market for Hongshan jade figurines. But even if it were granted that this were a forgery contrived to meet a high demand, the implication is that it's still a modern duplicate of a *genuine* Hongshan sculpture. Thus, the case for dinosaurs roaming ancient China with man would not suffer at all.

As it turns out, though, the artifact is not a forgery. Its authenticity has been verified by an expert third-party.(15) The feeble argument that it actually represents a pig is soundly refuted by the existence of other Hongshan carvings which actually look like pigs.(16)

### **Crocodile-Leopard**

Around 100 B.C. the Nile Mosaic of Palestrina was created. It depicts many familiar animals with Greek labels, including the crocodile, giraffe, hippo, monkey, lizard, and turtle. The identification of the animal shown in this close-up is the subject of much controversy because it is difficult to identify with any extant creature. It has been suggested that the animal may be an otter.(17) This is not plausible, however, since the same mosaic elsewhere depicts a pair of animals explicitly labeled as otters!



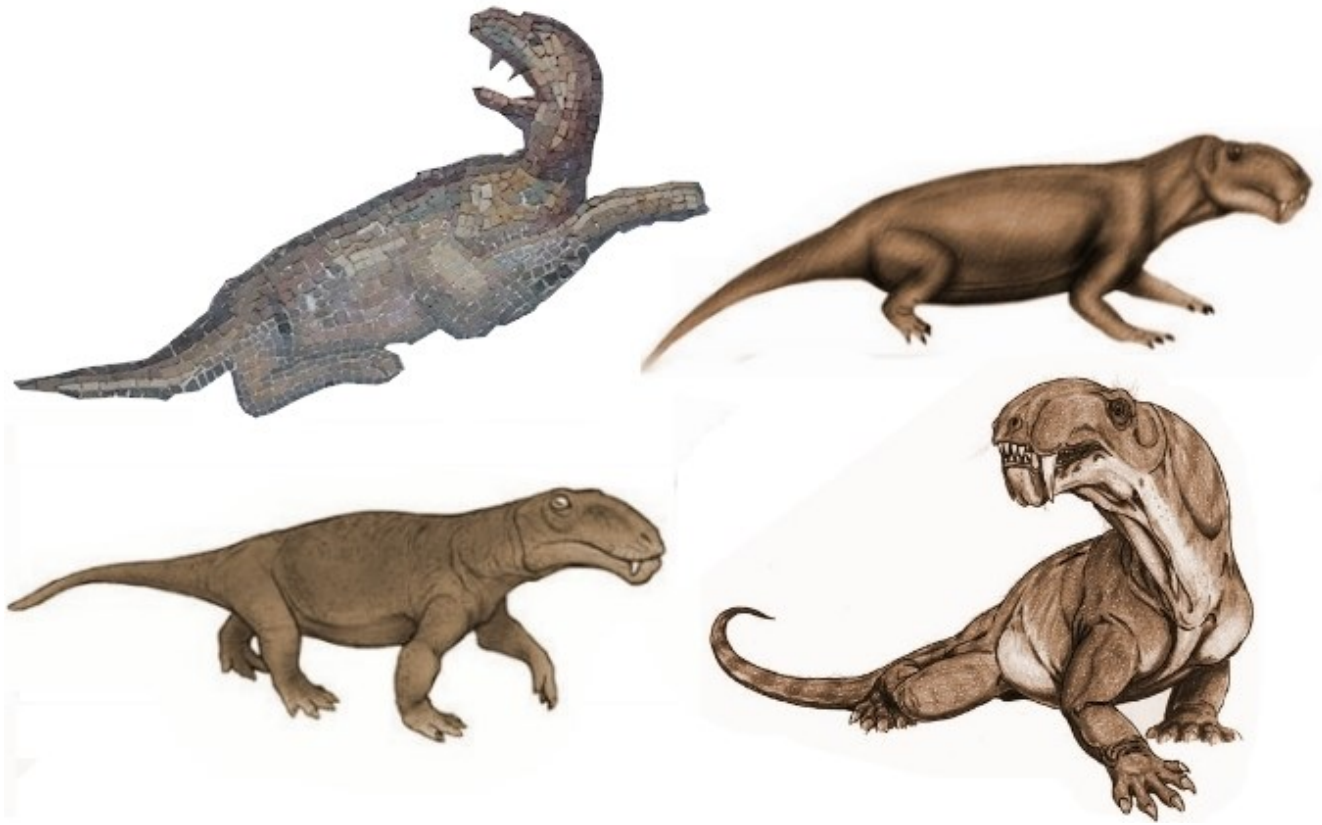


genesispark.com

The Greek label for this animal reads crocodile-leopard. This unfamiliar term may be the key to identifying the mysterious creature. The ancient Greek word for giraffe was camel-leopard, referencing the giraffe's camel-like morphology and leopard-like color pattern. Why would the animal in the mosaic be called a crocodile-leopard? The leopard part of the name is obviously not due to its color pattern. It can be concluded that the animal shared some mixture of both reptilian and mammalian traits.

No animal alive today that resembles the crocodile-leopard could be accurately described as a mixture of both reptile and mammal, but there is an extinct group of organisms which definitely can. They are literally called mammal-like reptiles! The identification of this animal may finally be solved, notwithstanding the evolutionary assertion that all mammal-like reptiles went extinct millions of years before the mosaic was created.

The graphic below illustrates this point very convincingly. Note how the animal from the mosaic appears right at home among modern reconstructions of various mammal-like reptiles.



(starting from top-right and going clockwise)  
karkemish00.deviantart.com  
Dmitry Bogdanov  
[www.geocities.co.jp/NatureLand/5218/biarumosukusu.html](http://www.geocities.co.jp/NatureLand/5218/biarumosukusu.html)

## Pompeii Fresco

Around 70 A.D. this fresco was painted on the wall of a Pompeian doctor's house. It depicts a Nilotic (Nile) scene, with pygmies interacting with some aquatic mammal and a couple of large reptiles.



[www.minervamagazine.co.uk](http://www.minervamagazine.co.uk)



Here are a couple close-ups of the animals, with modern depictions of extinct creatures for comparison.



Fresco Close-Up:  
[www.marine-antique.net](http://www.marine-antique.net)  
Moeritherium:  
[www.colegioglennndoman.edu.co](http://www.colegioglennndoman.edu.co)

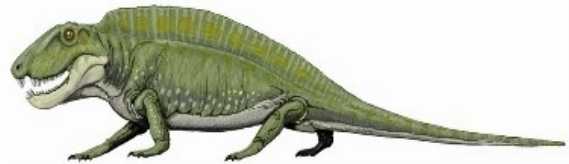
### Moeritherium

supposedly extinct for 35 million years



### Sphenacodon

supposedly extinct for 280 million years



Note the mammal in the fresco and the modern *moeritherium* illustration both possess an elongated, fleshy snout. Consistent with modern interpretations of *moeritherium* remains, the animal in the fresco led a partially aquatic lifestyle. The reptile beneath strongly resembles the *sphenacodon*, likely a relative of *dimetrodon*, but with a smaller sail.

Critics of the *moeritherium* and *sphenacodon* interpretation have argued the fresco actually depicts a hippo and a crocodile. As evidence, they cite several related pieces of art which depict pygmies in similar scenarios interacting with hippos and stylized crocodiles. The insinuation is that the '*sphenacodon*' is a heavily stylized (or poorly drawn) crocodile. One obvious problem with this argument is that crocodiles do not have a sail on their back, and artists don't just accidentally draw sails on the backs of crocodiles. Even if it were to be argued that the reptile in the fresco doesn't have a sail, but rows of spines that give the illusion of a sail, the fact remains that the short spines (if they could even be called that) on a crocodile's back increase in length towards the end of the tail, while the exact opposite occurs with the fin-like structure on the creature in the painting.

A similar argument is put forth by skeptics for the animal identified here as a *moeretherium*; it's claimed to be a stylized or incorrectly drawn hippo. However, it's hard to imagine how the artist, if he indeed were intending to paint a hippo, could have gotten the anatomy so grossly incorrect. This holds true even if the artist were depicting a hippo based on word of mouth, and had never seen a real one before. The head of a hippo, along with its nose, are extremely broad and thick, and the same is true of

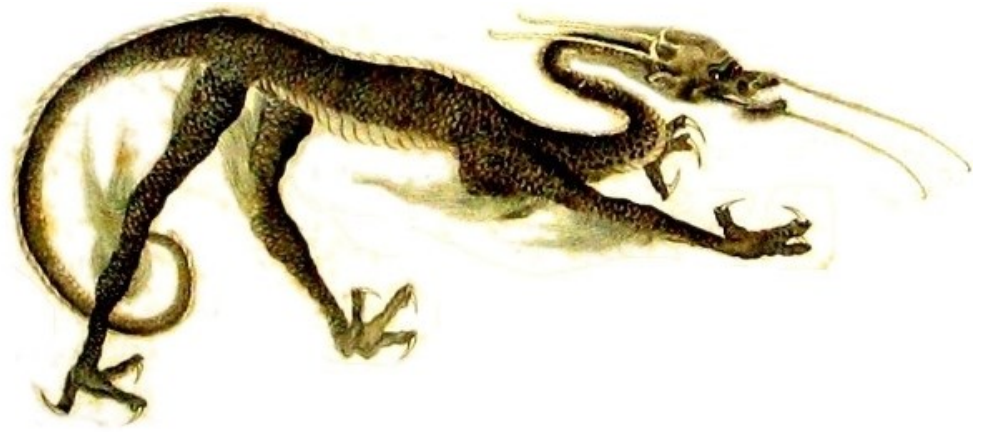
its body. Also, a hippo's legs are very short. In every aspect where the mammal of the fresco departs from resemblance to a hippo, it matches the *moeretherium*. The same goes for the reptile.

### Chinese Dino 1500 A.D. painting



banrepcultural.org

The Shanghai Museum exhibits this piece of Chinese art. It was painted around 500 years ago during the Ming Dynasty by artist Ding Yunpeng, and is one of the most realistic depictions of the popular Chinese Dragon. Instead of drawing it as lengthy and flexible as the modern parade float, its structure is far more dinosaurian. Also, in contrast to other portrayals where the creature has actual wings, Yunpeng was content to draw it with filamentous tuffs. This is fascinating, because *ceolurasaur* fossils are often described as possessing filamentous plumage.(18)(19) Notice how similar this modern depiction of a *ceolurasaur* is to the animal in the 500 year old painting.



### **Coelophysis**

*supposedly extinct for about 200 million years*

Chinese Dragon:  
s8int.com  
Coelophysis:  
studyblue.com

Now, one of the more obvious disparities is the pair of horns that adorns the dragon, but this is not reason to dismiss the comparison altogether. Animals often come in both horned and hornless varieties. For example, Carnotaurus is likely a horned relative of T. Rex:





**Carnotaurus**



**T. rex**

Carnotaurus:

<http://gamerhavennews.com/2012/07/primal-carnage-reveals-the-pyromaniac-and-carnotaurus-classes/>

T. rex:

[http://world-of-fantasia.creatures.wikia.com/wiki/Tyrannosaurus\\_Rex](http://world-of-fantasia.creatures.wikia.com/wiki/Tyrannosaurus_Rex)

There were even horned varieties of animals one might not expect to ever have horns, such as the gopher and armadillo:



**Extinct Horned Gopher**



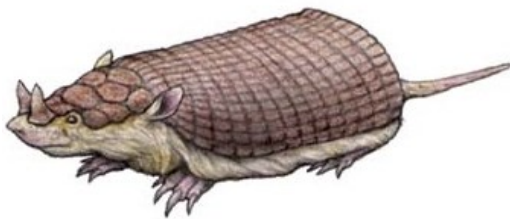
**Modern Gopher**

Horned Gopher:

[kira56\\_02 on photobucket.com](http://kira56_02.on.photobucket.com)

Gopher:

<http://www.zastavki.com>



**Extinct Horned Armadillo**



**Pink Fairy Armadillo**

Horned armadillo:

<http://palaeopedia.tumblr.com>

Pink Fairy Armadillo:

[en.wikipedia.org/wiki/Pink\\_fairy\\_armadillo](http://en.wikipedia.org/wiki/Pink_fairy_armadillo)

## **Duck-Billed Dino in France**



Like the previous piece of art, this one was also constructed in the 1500s. This is a close-up of a tapestry currently on display in the Royal Chateau de Blois, France. If one attributes the pair of golden wings to artistic license, the creature appears to be a very unambiguous *hadrosaur*, a.k.a. a duck-billed dinosaur.



genesispark.com

Consider the great resemblance between this actual, juvenile *hadrosaur* skeleton and the animal in the tapestry. One could superimpose them on each other and have a very close match.



Skeleton photo by Claire Houck

Note also the similarity with this modern *hadrosaur* reconstruction.



source unknown

### Spanish *Nothosaur* Altar Cloth



Photo by M&G Therin-Weise

This altar cloth was created 400 years ago and adorns the Chapel of St. George in Barcelona, Spain. It depicts St. George slaying the dragon. A picture is worth a thousand words, so the comparison practically speaks for itself. *Nothosaurs*, supposedly extinct for millions of years, apparently inhabited the rivers of Spain just a few centuries ago.



### **Nothosaur**

*supposedly extinct for 210 million years*

Tapestry Cutout:  
genesispark.com  
Nothosaur:  
thenaturalhistorian.com

This is far from an exhaustive list of historical evidences for dinosaur and man coexistence, yet it can be seen that such evidence spans millennia and is found all over the world.

- (1) <http://www.ncbi.nlm.nih.gov/pubmed/16293759>
- (2) <http://bio.sunyorange.edu/updated2/pl%20new/36%20Sauropods.htm>
- (3) Ibid.
- (4) Ibid.
- (5) <http://creation.com/bishop-bells-brass-behemoths>
- (6) <http://www.apologeticspress.org/APContent.aspx?category=9&article=3533>
- (7) <http://www.livescience.com/13448-dinosaur-human-petroglyph-creationism-debunked.html>
- (8) [http://www.untoldsecretsofplanetearth.com/docs/kachina\\_bridge-2011-10\\_mb.pdf](http://www.untoldsecretsofplanetearth.com/docs/kachina_bridge-2011-10_mb.pdf)
- (9) <http://www.newspapers.com/newspage/1717163/>
- (10) <http://data.bls.gov/cgi-bin/cpicalc.pl?cost1=300&year1=1926&year2=2014>
- (11) Murphy, Jan Elizabeth. *Mysteries and Legends of Colorado: True Stories of the Unsolved and Unexplained*. Globe Pequot, 2007. Print.
- (12) tarapotolife.com
- (13) <http://www.rupestreweb.info/bellohorizonte.html>
- (14) <http://www.faithfulanswers.com/are-the-ica-stones-authentic/>
- (15) Nelson, Vance. *Untold Secrets of Planet Earth: Dire Dragons*. 2011. Print.
- (16) <http://www.icr.org/article/dinosaur-youngster-looks-like-dragon/>
- (17) <http://palaeo-electronica.org/content/2013/541-dinosaurs-in-greco-roman-art>
- (18) <http://www.ncbi.nlm.nih.gov/pubmed/22753486>
- (19) <https://answersingenesis.org/dinosaurs/feathers/fine-filaments-feathered-dinosaurs/>
- (20) <http://nmstatefossil.org/item/151>